

## **Index**

Configuration .....	2
Extra Configuration .....	3
Refactoring .....	3
Import data from Microsoft Word .....	4

## Configuration

Right now, WikiWhirl only supports MediaWiki as wiki engine and MySQL as database engine. The configuration can be saved (“**Save conf. to file**”) and loaded (“**Load conf. from file**”) from a configuration file (located in the FreeMind plugins folder -> WikiWhirl/resources/connection.dat). Sections can also be extracted (“**Extract sections**”) from articles and categories; however, this option takes a lot of time since it has to parse all the wiki content.

WikiWhirl Configuration

WikiWhirl Configuration Extra configuration

Configure WikiWhirl to extract a mind map from a wiki

Wiki engine  DB Type

Save conf. to file  Load conf. from file

Extract sections  Save DB

Wiki name

Wiki URL

DB Host

DB Name

DB Username

DB Prefix

DB Password

Confirm DB password

Filter by  AND title:

Configure and load it!

WikiWhirl

Complete configuration data  
DB prefix and filters are optional

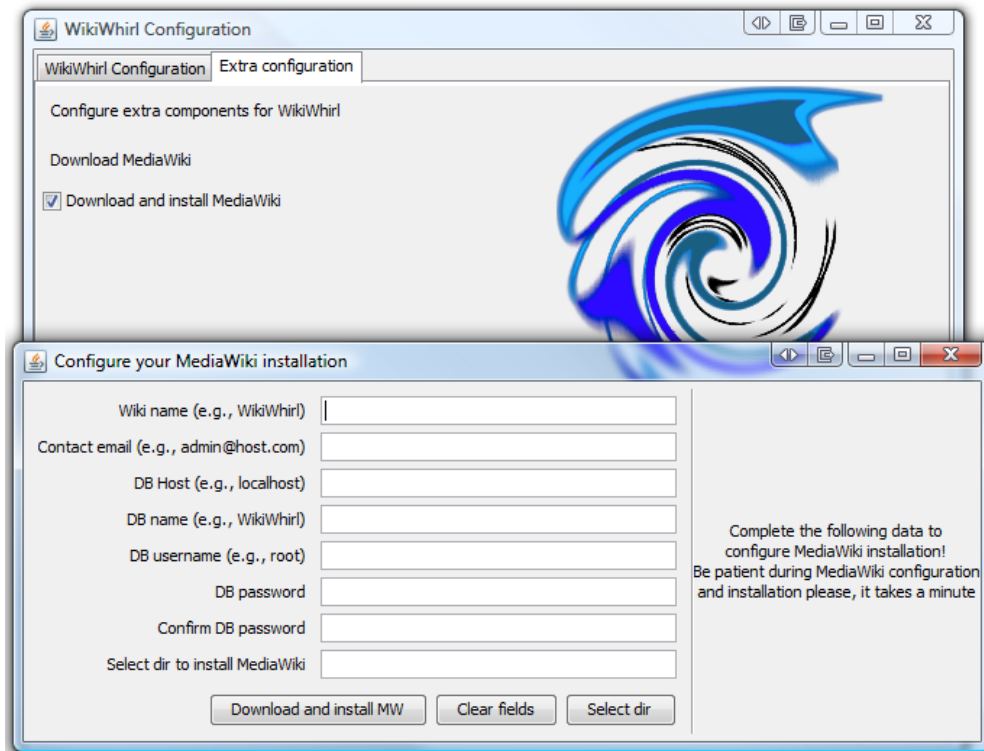
It is highly recommended to save a database dump before starting a refactoring session. By default, this option is enabled (“**Save DB**”), and it will save an SQL dump (located in the FreeMind plugins folder -> WikiWhirl/resources/databaseName.sql).

To start, it is needed to fulfil some data: from the wiki, name and URL; from the database, host, name, username and password.

Lastly, the initial view can be filtered based on the node type: Categories, articles or sections. Besides that, a node title can be introduced to filter based on that node title.

## Extra Configuration

WikiWhirl allows directly downloading and installing MediaWiki 1.20.2. Just fulfil the necessary data: wiki name, email, DB configuration parameters and the directory of your server e.g., www of Apache.

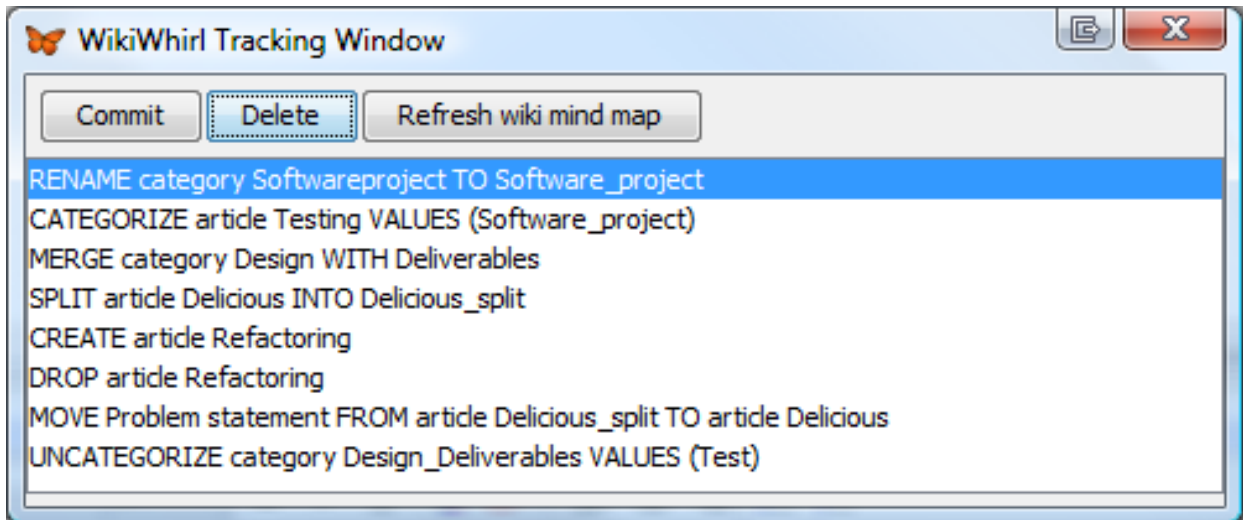


## Refactoring

During this stage, all the user actions that correspond with WikiWhirl refactoring operations are recorded and shown in the “**WikiWhirl Tracking Window**”.

The “**Delete**” button eliminates the selected refactoring operation from the list, so it will not be executed against our wiki.

The “**Refresh wiki mind map**” restores the database and the mind map to the initial state. This option only takes effect if it was previously selected “**Save DB**” during the configuration.



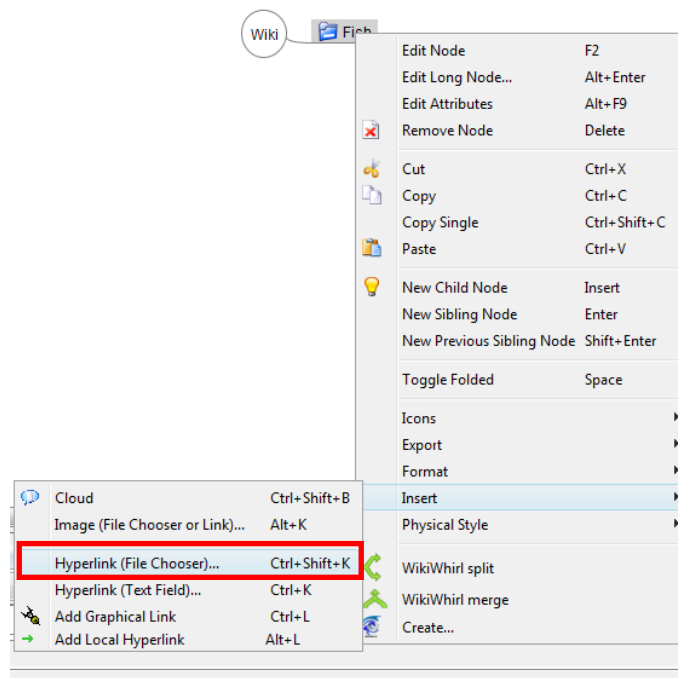
WikiWhirl supports 8 refactoring operations: Create, rename, categorize, uncategorize, drop, move (sections), split and merge.

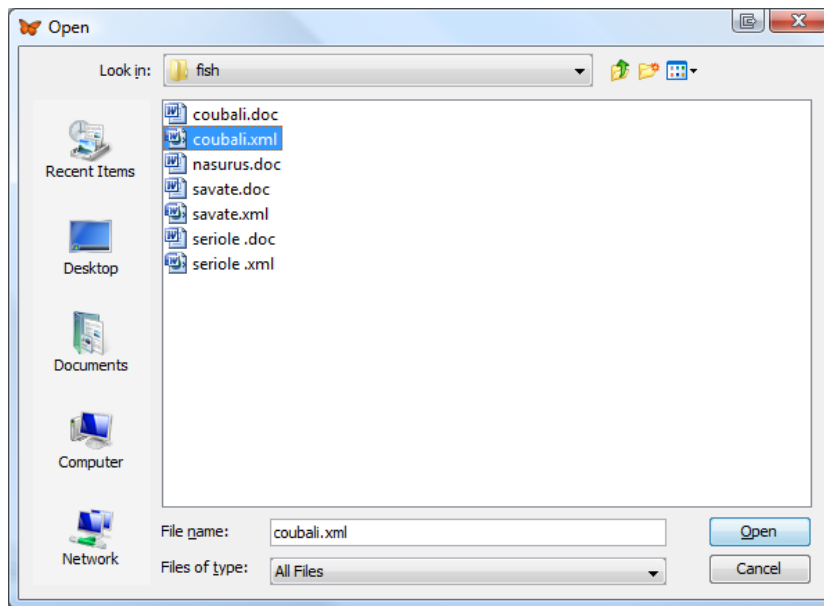
The content is an invariant, so sections cannot be deleted.

### Import data from Microsoft Word

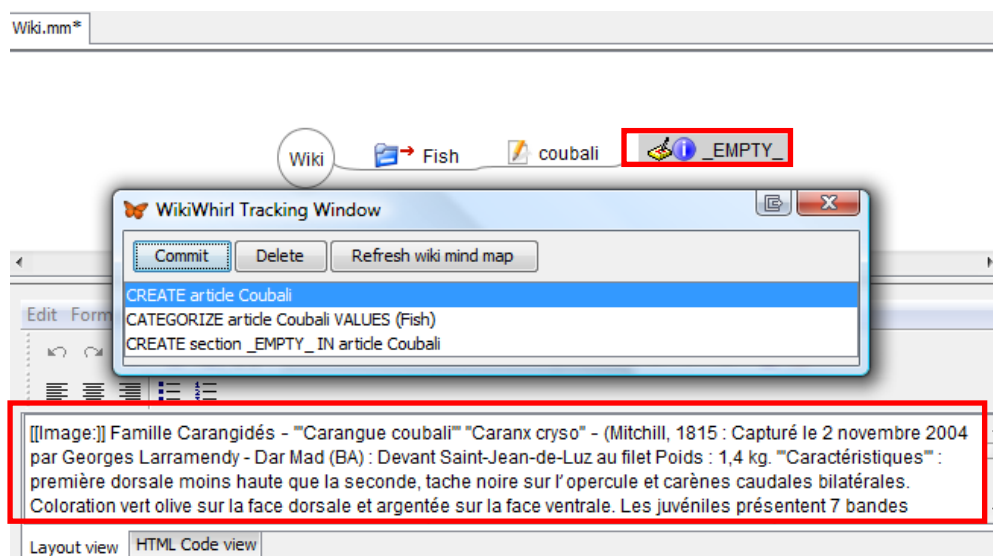
To import content from Microsoft Word documents:


- First, it is needed to export those documents as XML Word 2003.
- Then, choose the FreeMind option “Insert” -> “Hyperlink (File Chooser)...” on a category or article node and select the new created XML Word document.





- WikiWhirl will detect the document headings and will create a node section of each of those headings (only works in the English version of Microsoft Word).
- In the case the document does not have any heading, then WikiWhirl will create a section called “\_EMPTY\_” with all the textual content of the word document.



- A section node can be easily transformed into new articles or sections. WikiWhirl enhances the FreeMind right-mouse click with a feature called “Create...”  Create... . This feature opens a text editor with two parts: a title, and the content. The title will become the article or section title, and the content will be that selected when

the user clicks on the right-mouse click. The next figure shows an example, where the user is creating a new article called “Family”, which will have the selected content.

